



MARYLAND **Essentials** for **Childhood**

Connecting Science, Policy & People
So Children Thrive.

Agenda:

2024 Leadership Awards Presentation
Community Partner of the Year
Advocate of the Year

Prevent Child Abuse Month: *Wendy Lane*
Legislative Updates: *Diana Philips*
Agencies Working for Everyone: *Frank Kros*
Maryland Information Network Partnership: *Kenyn Benjamin*
Future Funding: *Wendy Lane*

Partner Updates
Next Steps and Adjourn

Leadership Awards:

Since 2019, together with SCCAN, Maryland EFC has issued leadership awards to key individuals and organizations for outstanding vision, dedication and commitment to ACE & Resilience Informed Policy.



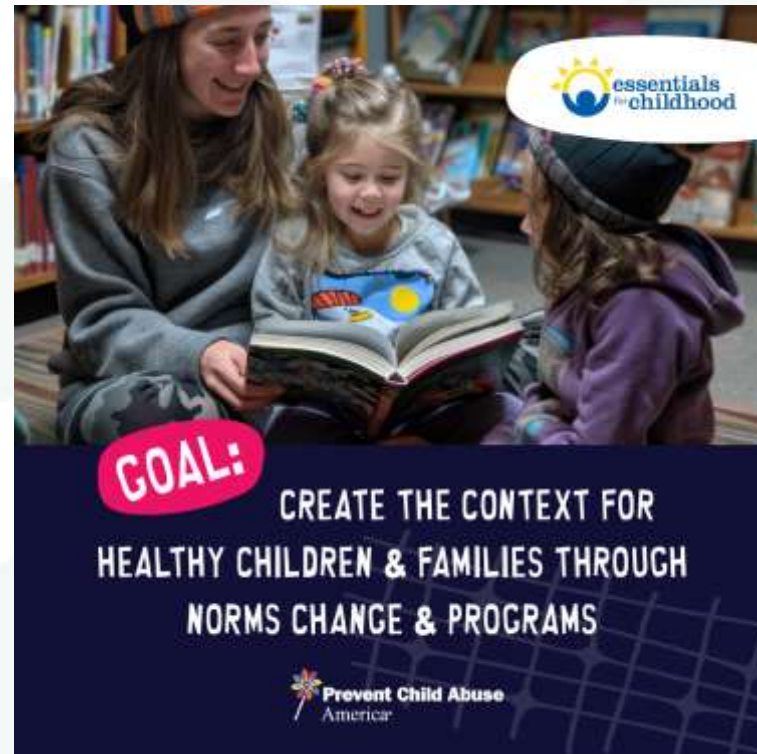
2024 Community Partner of the Year:
Taghi Modarressi Center for Infant Study,
Dept. of Psychiatry, University of Maryland
School of Medicine
Executive Director: Kay Connors, LCSW-C

2024 Advocate of the Year:
D'Lisa Worthy, M.Ed.



Prevent Child Abuse America:

Released Child Abuse Prevention (CAP) Month assets designed exclusively for Essentials for Childhood self-supported states! The materials reflect Prevent Child Abuse America's CAP Month Theme, **Powered by Hope, Strengthened by Prevention**, and include an Essentials for Childhood social media post for each week of CAP month, an infographic about Essentials for Childhood, virtual meeting backgrounds, and email signature graphics.



UPDATES:

Maryland General
Assembly
2025 session closes
Monday, April 7

Legislative Update:
Diana Philip



SB 770 / HB 1105 - Background

Applicants for Positions Involving Direct Contact With Minors – Required Information, Review Process, and Reporting – Alterations

- 2018 – HB 1072: Required public & non-public schools to provide training & codes of conduct re: sexual abuse & sexual misconduct
- 2019 – HB 486 – Required pre-employment screening for sexual abuse & misconduct – prior employers
- Gaps in legislation
 - No oversight of implementation/compliance
 - No required CPS background checks
 - Youth-serving organizations?? Child Care??
 - Boundary violating behavior

SB 770 / HB 1105

Applicants for Positions Involving Direct Contact With Minors – Required Information, Review Process, and Reporting – Alterations

- **Required CPS background checks:** Schools, childcare, & youth-serving organization employees
- **Pre-Employment Screening – Sexual Abuse & Misconduct:**
 - Childcare & Youth-Serving Organizations added
 - Boundary-violating behavior added
- **Compliance:** Reporting annually to MSDE

SB 770 / HB 1105

Public Schools and Youth Services – Crisis Support and Assistance and Workgroup Study

- **Crisis Support:** schools required to provide when teacher/staff removed from classroom or school due to criminal activity or for student safety
- **MSDE Workgroup:**
 - Examine effect of inclusion of boundary-violating behavior on schools & youth-serving organizations
 - Review definitions of boundary-violating behavior & youth-serving organizations - sufficiently precise, specific, unambiguous.

UPDATES:

....

Please Join Us for In-Person Training.

IMPLEMENTATION
MARYLAND: THE
STATE OF
RESILIENCE

Friday, February 21 | 12-4 p.m. ET
9770 Patuxent Woods Drive,
Columbia, MD 21046

Presenter: Frank Kros, MSW, JD
Training funded through a MDH grant

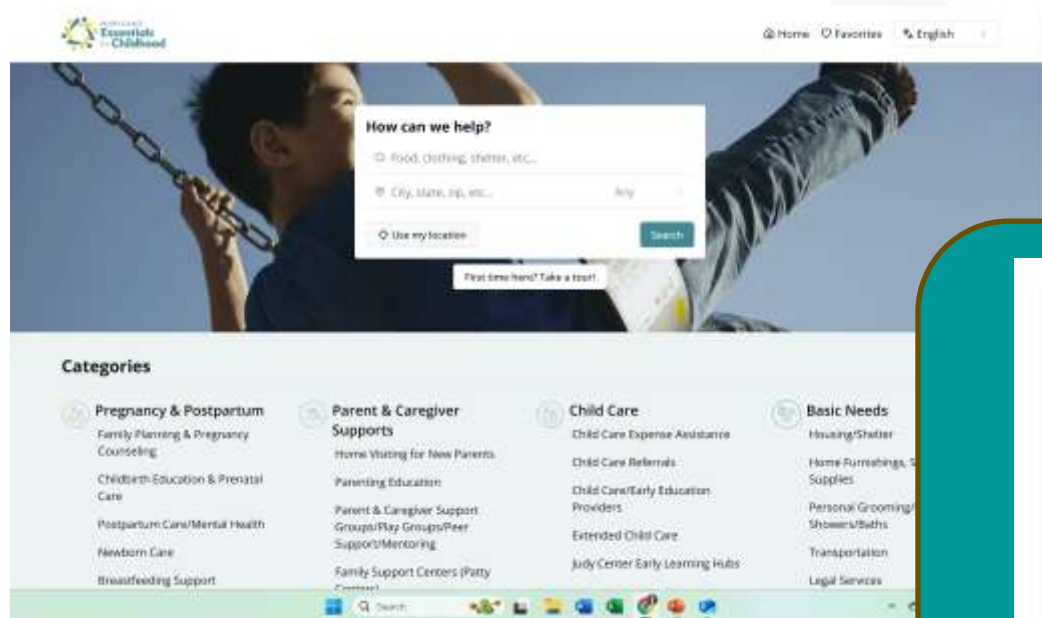

Maryland
DEPARTMENT OF HEALTH

Agencies Working For Everyone (AWE) Training Update: Frank Kros

Maryland Information Network

Partnership Update: Kenyn Benjamin

The search database in MarylandEFC.org is a zip-code specific searchable database allows users to access resources in real time in their community. Powered by the Maryland Information Network, this tool has the capacity to be more robust and provide hyper local access to organizations supporting families.



Share Your Resource

Do you provide resources and services to families raising infants, children and adolescents? If you're **not listed** in the resource database, read **211 Maryland's inclusion policy**. Then, tell us about your organization and encourage other providers in your community to do the same.

Add Your Agency

Update Your Agency

Our Work Continues:

Future Funding

- Strategic Planning

- Maintaining MarylandEFC.org

- Updating & Promoting the Brain Building Toolkit & Search Database

Partner Updates

Next Steps and Adjourn



MARYLAND
Essentials
for **Childhood**

Connecting Science, Policy & People
So Children Thrive.

marylandefc.org | info@marylandefc.org