



MARYLAND **Essentials** for **Childhood**

Connecting Science, Policy & People
So Children Thrive.

Agenda:

Welcome and Introductions
Wendy Lane, Maryland EFC Chair

What is Essentials for Childhood & Maryland's story

NEW Maryland EFC Website
Vanessa Milio, EFC Outreach Coordinator

What's next for EFC?
Break Out Groups

Reconvene & Sharing

What is Essentials for Childhood?

Who We Are

Maryland Essentials for Childhood (EFC) is a statewide collective impact initiative to prevent adverse childhood experiences.

We encourage **a multi-generational approach that promotes safe, stable, and nurturing relationships and environments that help children grow up to be healthy and productive citizens.**

In turn, those citizens can build stronger and safer families and communities for their children.

Our Goals

Maryland EFC employs the principles of collective impact and the ever-evolving research in brain science, epigenetics and resilience to advance our goals.

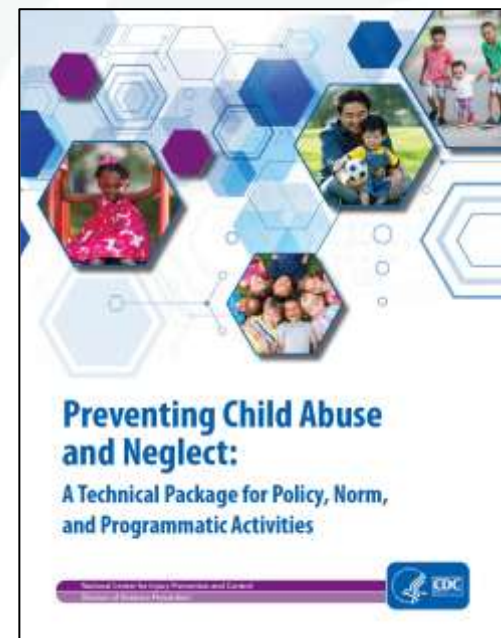
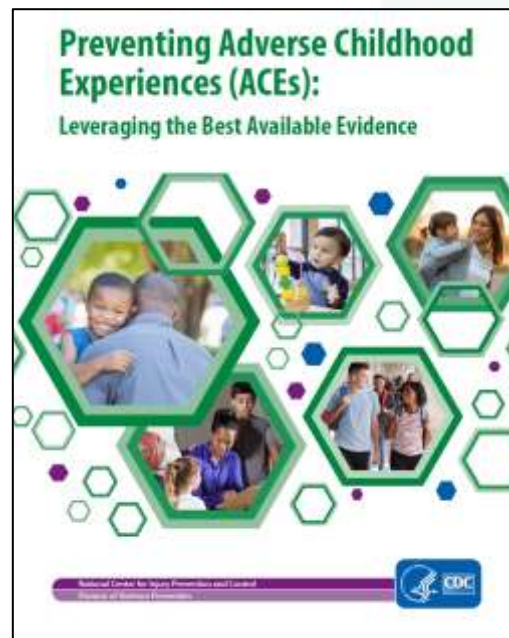
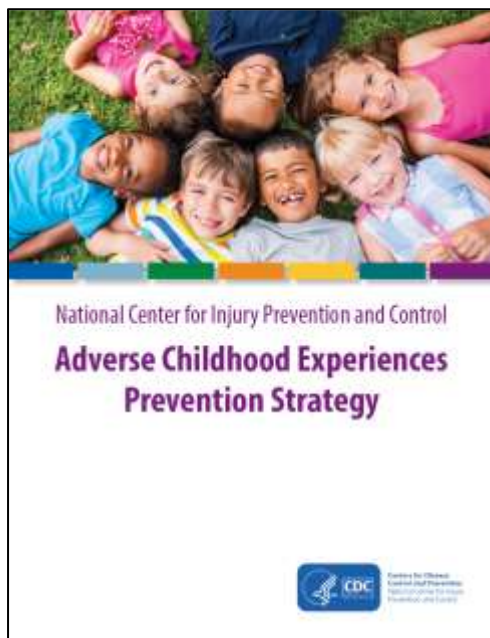
We achieve this by:

- Educating everyone on the brain science
- Collecting, evaluating and using data
- Working Collectively
- Working with State and Local Governments

Why Collective Impact Matters:

Maryland EFC recognizes that our vision for a state where all children, youth and their families thrive in safe, stable and nurturing relationships and environments will take action across multiple public and private systems to achieve. **That's why our work relies on collaboration and a common agenda to lead our conversation and chart our path forward.**

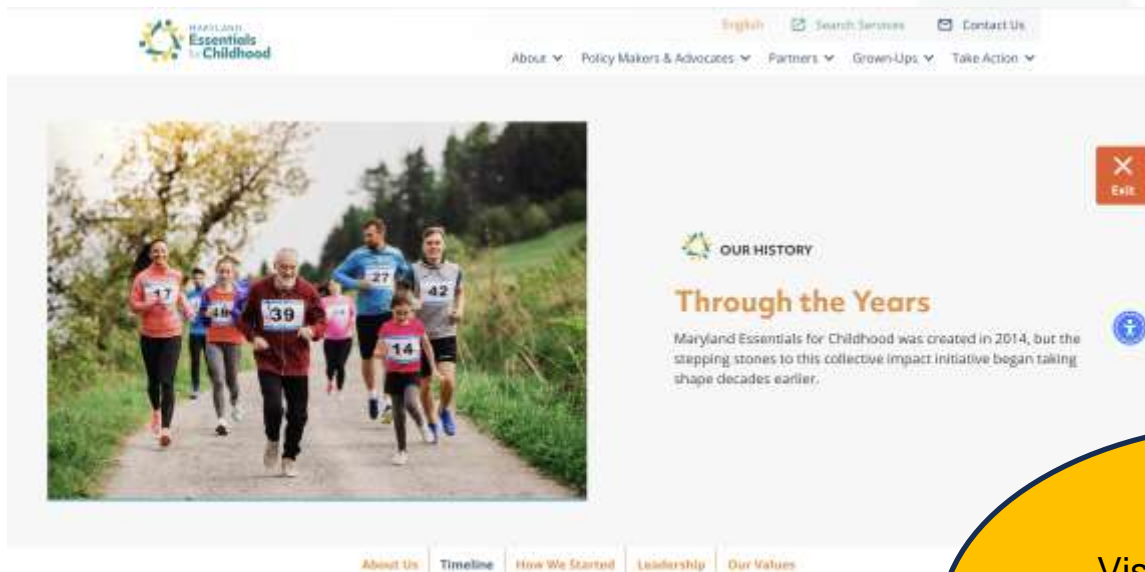
We also recognize the support we've received from the Centers for Disease Control (CDC). The CDC's original EFC initiative was intended for states committed to the positive development of children and families and the prevention of all forms of child abuse and neglect. In 2023 the original program ended, and CDC refocused its efforts as *Essentials for Childhood: Preventing Adverse Childhood Experiences through Data to Action*.



How we started

Working collaboratively, using the CDC's Essentials for Childhood framework, Maryland built a robust network of partners to support to the collective work and growth of Maryland Essentials for Childhood.

Our original backbone organizations, the State Council on Child Abuse & Neglect (SCCAN) and The Family Tree launched our efforts, and we welcomed the addition of Maryland Information Network last year.



Visit the full timeline
on the new website!

<https://marylandefc.org/about/timeline/>



Connecting Science, Policy & People
So Children Thrive.

Trauma Informed Care Commission

The Trauma Informed Care commission was created as part of the *Healing Maryland's Trauma Act of 2021*.

Maryland EFC would like to thank the members of the Commission and the volunteers who served on the Commission's sub-committees for their work to prioritize the trauma-responsive and trauma-informed delivery of State services that affect children, youth, families, and older adults.

Members of the Commission on Trauma Informed Care

The Hon. Malcolm Augustine

The Hon. Robbyn Lewis

The Hon. Teresa Reilly

The Hon. Zeke Cohen

The Hon. Elizabeth Guroff

The Hon. Doncella Wilson

Laura Herrera Scott, M.D., Secretary of Health

Vincent Schiraldi, Secretary of Juvenile Services

Carol Beatty, Secretary of Disabilities

Helene T. Grady, Secretary of Budget & Management

Roland L. Butler, Jr., Superintendent of State Police

Carey Wright, Superintendent of Education

Christina Peusch

Edward Gallo, Exec. Director, SCCAN

Dr. Tara Doaty, Ph.D.

Dr. Joyce Harrison, M.D.

Dr. Fredrick Strieder, Ph.D.

Christina Bethell, Ph.D.

Katie O'Mailey, LCSW-C, RYT

Heather Chapman

Frank Kros

Matila Sackor-Jones II

Ulysses Archie

Jessica Lertora

Debbie Badawi

Dr. Inga James, Ph.D.

NEW website:

Pathways through the site

Search Database of Resources

Brain Building Toolkit

Dive Deeper

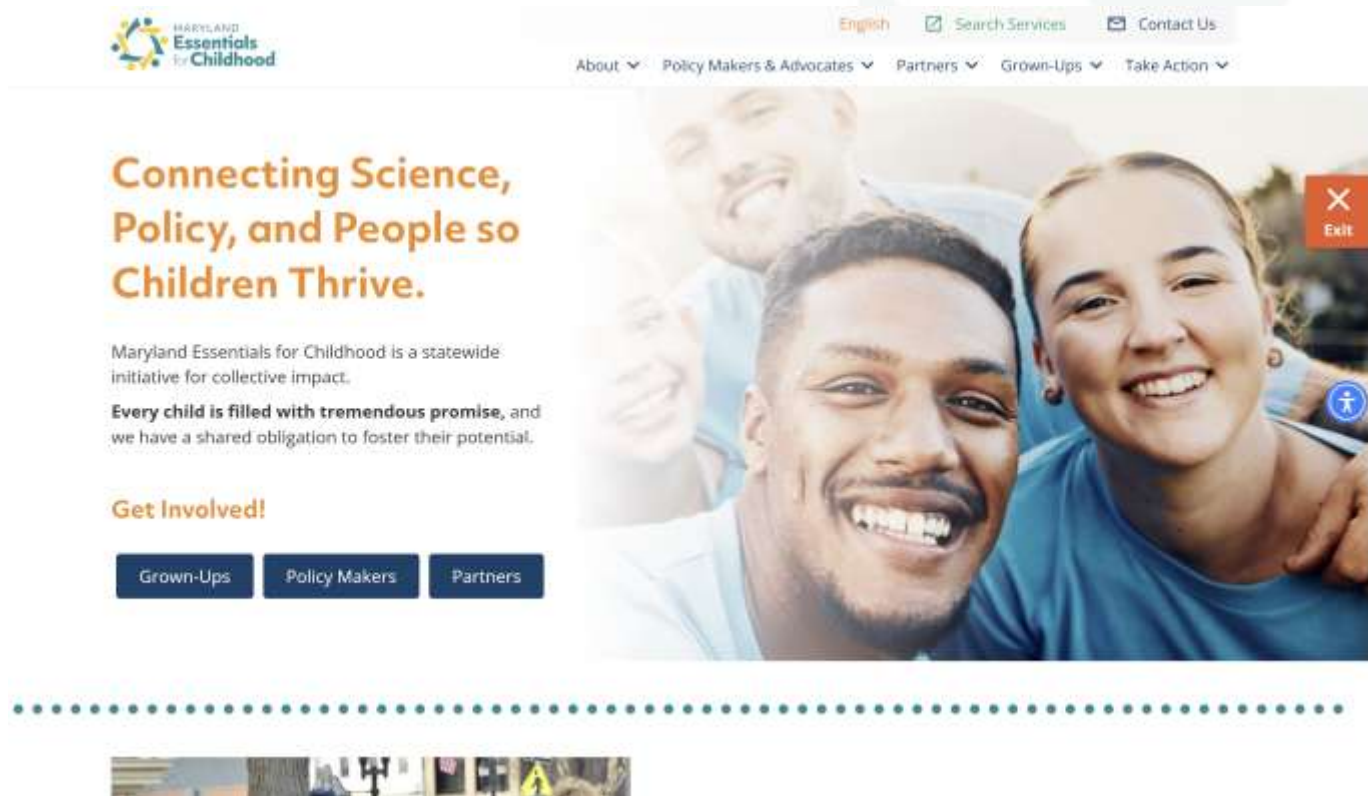
ACE Interface Outreach

3 Pathways:

Grown Ups: Starts you at the Brain-Building Toolkit

Policy Makers: Starts you at legislative initiatives

Partners: Starts you at our collaborative work

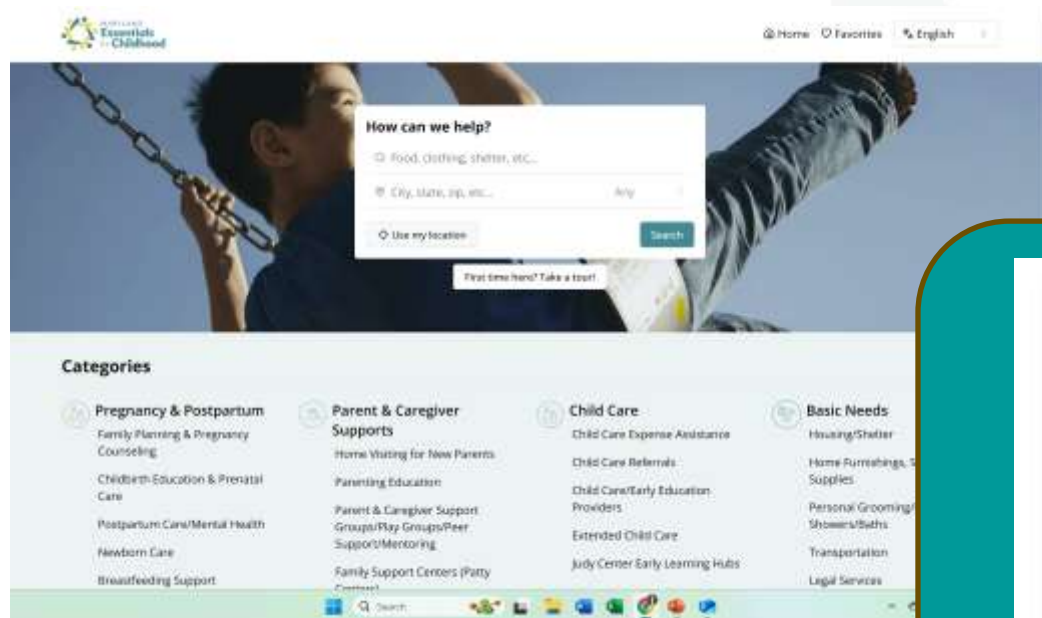


Connecting Science, Policy & People
So Children Thrive.

Search Database

A zip-code specific searchable database allows users to access resources in real time in their community.

Powered by the Maryland Information Network, this tool has the capacity to be more robust and provide hyper local access to organizations supporting families.



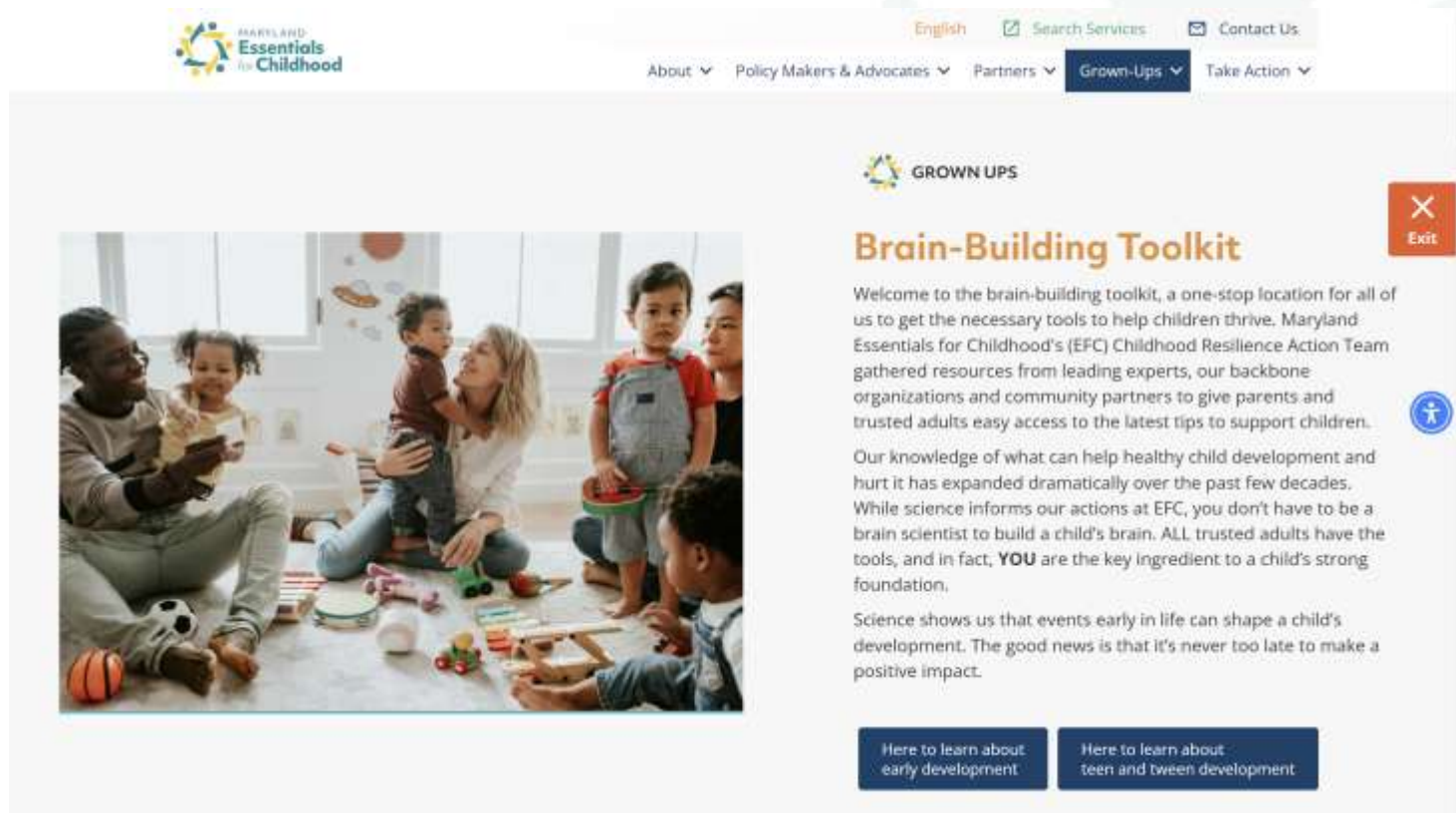

Share Your Resource
Do you provide resources and services to families raising infants, children and adolescents? If you're **not listed** in the resource database, read **211 Maryland's inclusion policy**. Then, tell us about your organization and encourage other providers in your community to do the same.

[Add Your Agency](#)

[Update Your Agency](#)

Brain-Building Toolkit

Working in partnership with FrameWorks Institute, the Brain-Building Toolkit translates science into action steps for grown-ups looking to support the children, tweens and teens in their lives.



Dive Deeper:

This is a content rich website designed to allow users access to research, white papers and data driven information on a variety of policy recommendations, ACE science and child development. When you want to learn more, **Dive Deeper.**



English

 Search Services

 Contact Us

About ▾

Policy Makers & Advocates ▾

Partners ▾

Grown-Ups ▾

Take Action ▾

Child Development

Building Adult Capabilities to Improve Child Outcomes: A Theory of Change

Harvard Center on the Developing Child

5-minute video depicting a theory of change for achieving breakthrough outcomes for vulnerable children and families. It describes the need to focus on building the capabilities of caregivers and strengthening the communities that together form the environment of relationships essential to children's lifelong learning, health, and behavior.

How Children and Adults Can Build Core Capabilities for Life

Harvard Center on the Developing Child

5-minute video exploring the importance of the development and use of core capabilities — known as executive function and self-regulation skills — from early childhood into adolescence and adulthood, so that we build communities that thrive.

Early Childhood

Prenatal-to-3 Policy Impact Center website

Prenatal-to-3 Policy Impact Center, Vanderbilt University

The Prenatal-to-3 Policy Impact Center empowers states with rigorous evidence to implement effective and equitable policies that ensure all children thrive from the start.

Index

- Childhood Adversity
- Childhood Development
- Early Childhood
- Maryland PACEs and other Health Data
- National PACEs Data
- Addiction
- Child Sexual Abuse
- Child Poverty
- Intervention
- Epigenetics
- Loneliness and Isolation
- Racism
- Youth Depression



Connecting Science, Policy & People
So Children Thrive.

ACE Interface Information:

The Family Tree leads the effort to enhance and expand the ACE Interface Trainings across Maryland. Information on the site demonstrates the program's reach and provides opportunities to attend a training, host a training or become a Master Trainer.



Break Out Groups:

Gather as a group of colleagues and use these prompts start a conversation.

With a shared vision of safe, stable, nurturing communities where children reach their full potential - what are the concerns shaping your community that preventative measures could impact?

Prevention looks like this to me...

EFC's next chapter should include...

Please designate a note taker in your group so we can recap together.

You're Invited!

On behalf of Maryland EFC & the Maryland Department of Health
you are invited to join us for the
Relaunch of a Transformative Partnership

Wednesday, February 26, 2025
Maryland Family Network
at Montgomery Park





MARYLAND
Essentials
for **Childhood**

Connecting Science, Policy & People
So Children Thrive.

marylandefc.org | info@marylandefc.org